



Prime VT

Device Summary

The Prime VT is a powerful device designed for fleet management, usage-based insurance, and similar markets. With built-in Cellular LPWA, GNSS, and G-sensor/Gyro sensor, it provides accurate real-time data, enabling property owners to remotely track vehicles, and initiate repossession when necessary. Experience hassle-free and convenient vehicle management with the Prime VT.



Fleet Management



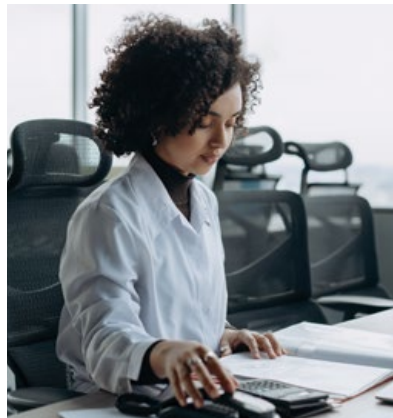
Vehicle Positioning

Network

- LTE CAT M1/NB2
- 2G fallback

Applications

- Fleet Management
- Usage-based Insurance



Usage Based Insurance

Product Highlights

- Latest LTE CAT M1/NB2 with 2G fallback
- Vehicle motion detection
- Breadcrumb Trails capable
- Crash detection
- Geo Fencing
- Monitoring battery level
- Easy configuration via MAP Utility© Tools
- Weatherproof IP65
- FOTA (Firmware Over-The-Air) Updates
- Platform integration ready
- Gsensor / Gyro sensor



Specifications:

Cellular Technologies

LTE CAT M1 / NB2

LTE Bands: B1, B2, B3, B4, B5, B8, B12, B13, B18, B19, B20, B25, B26(Cat M1 only), B27 (Cat M1 only), B28

GSM/GPRS: 850/900/1800/1900 MHz

Data Support

SMS, UDP, TCP Packet Data

Location Technologies

GPS+Galileo (L1+L5)

135 Channel GNSS

WiFi

Dimension

82 x 45 x 12 mm

Environmental

-40° to +85° C (operating without battery)

-40° to +85° C (storage)
Humidity 95% RH @ 50° C non-condensing

Antenna

Internal GPS Antenna

Internal Cellular Antenna

Internal Wi-Fi/BLE Antennas

SIM Access

Nano SIM

Device Configuration

MAP Utility© Tools

Input Voltage

10-30V

Weatherproof

IP65

Battery

130 mAh Lithium-ion Backup Battery

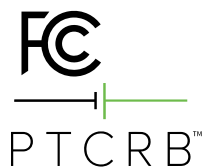
Prime VT Versions:

2-Wire

Available Services:

- Technical Support
- Application Support
- Guaranteed Warranty
- Warehousing & Kitting

Certifications:



Add: 6001 Broken Sound Pkwy NW Ste. 504, Boca Raton, FL 33487

Web: www.micronwireless.com/contact/

E-mail: info@micronwireless.com

Tel: 1-888-538-3489

